

Pinch by Rogerseller

Flush Mounted
Ceiling Shower

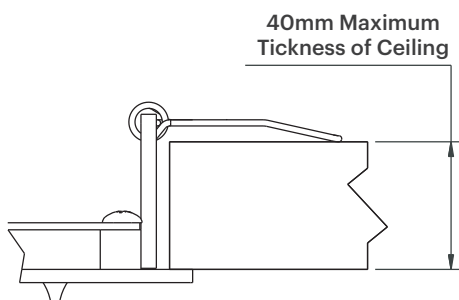
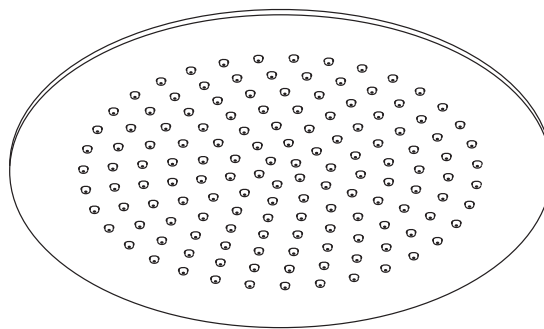
Installation
Instructions

Specification

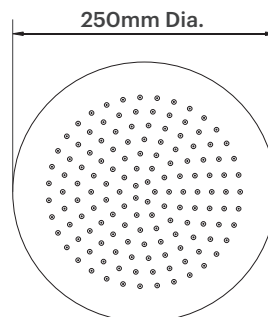
Pinch by Rogerseller
Flush Mounted Ceiling
Ceiling Shower

3506004201 — Chrome

i Other finishes available



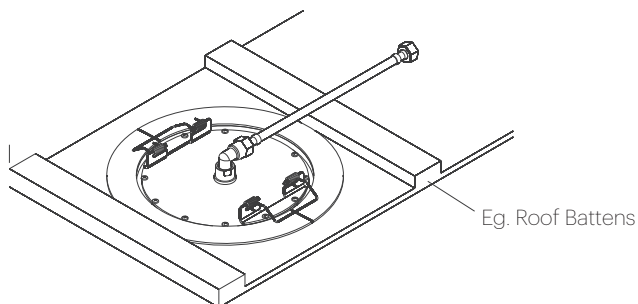
40mm Maximum
Thickness of Ceiling



250mm Dia.

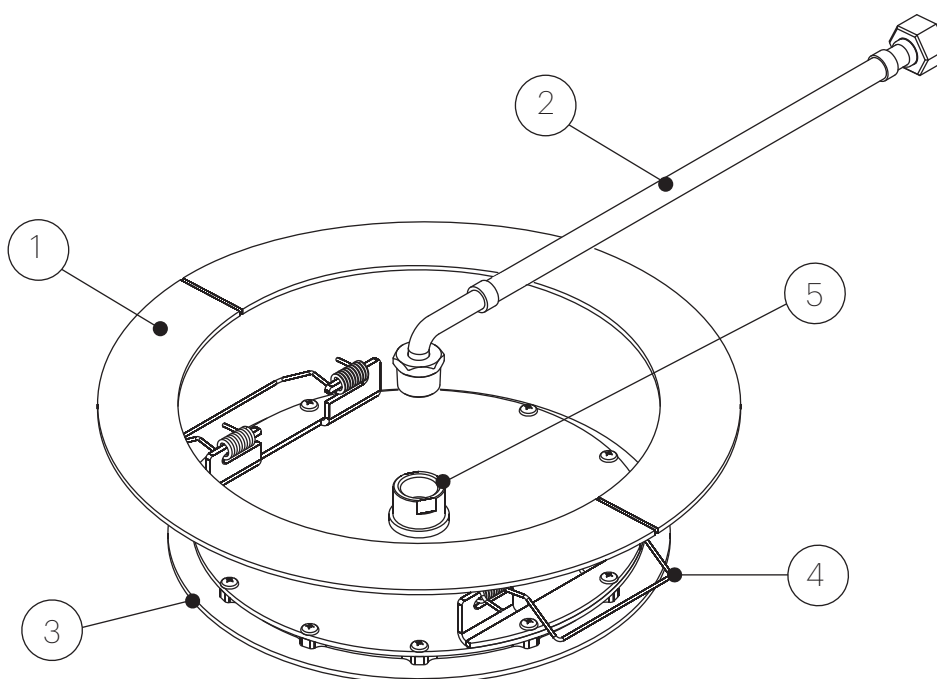
Parts List

1. Support Plate
2. Flexi-Hose
3. Shower or Face Plate
4. Springs
5. Inlet Nipple



Eg. Roof Battens

Note: Depending on the roof structure, extra bracing may be required to sufficiently support 5kg.

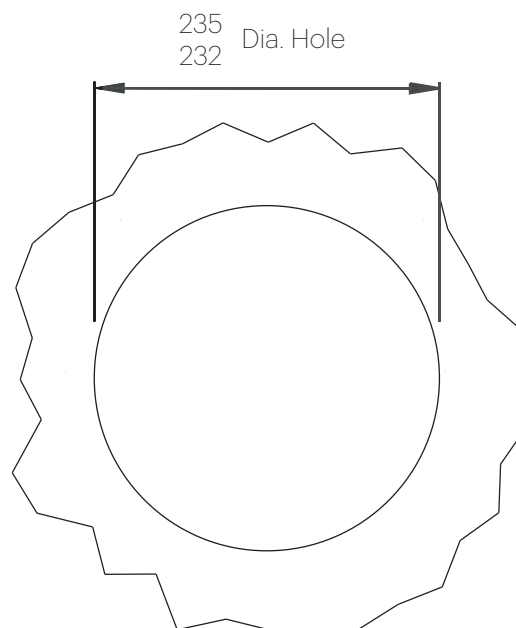


Installation

Step 1

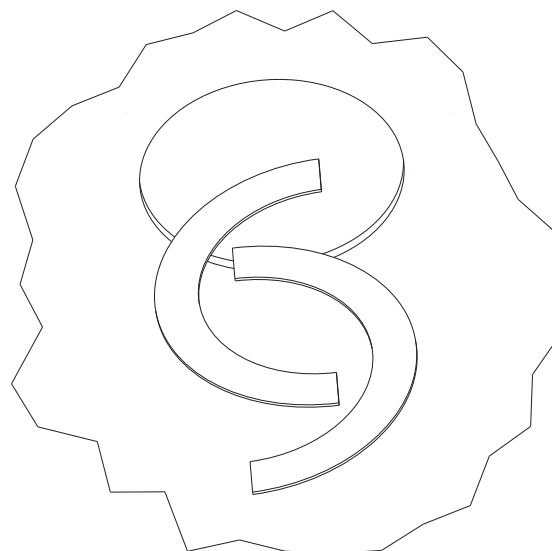
In a suitable and desired location mark the hole required using the inside edge of the support plates.

Note: This shower is designed to be installed on a Horizontal plane and not suitable for use on angled ceilings.



Step 2

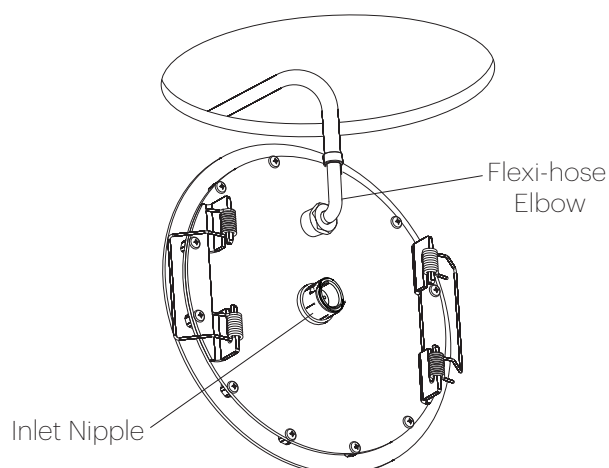
Place the support plates through the cut-out and mount on top ceiling surface, inline with cut-out. Secure using suitable construction adhesive.



Step 3

Connect the Flexi-hose Elbow to the showers Inlet Nipple and tighten until firm and watertight.

Note: Be careful not to over tighten as this may damage the flow controller.

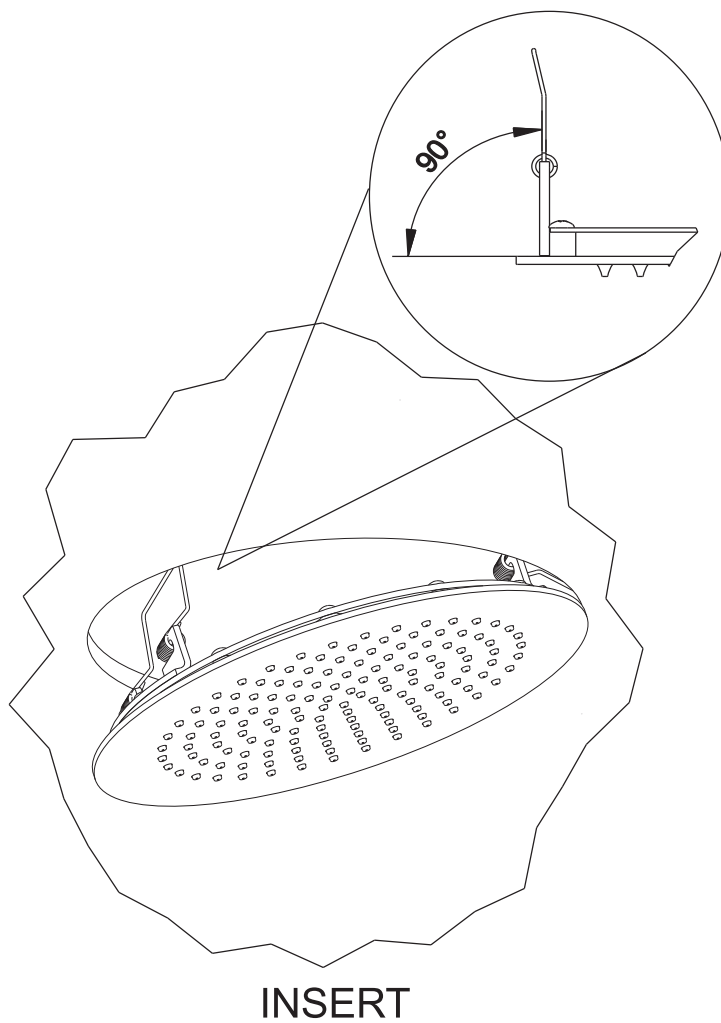


Installation

Step 4

In a very similar fashion to a LED downlight, Push the springs upward and inward to approx 90 degrees and insert the shower into the cut-out.

Release springs and push up carefully and shower will snap into place.



Specifications

It is a requirement of state plumbing codes that licensed plumbers carry out all tapware installations. All installations must comply with the relevant requirements of AS/NZS3500 and local plumbing codes.

Where showers incorporate flow controllers, instructions that care be exercised during installation to ensure that the male connecting threads do not damage the flow controllers.

A backflow prevention / dual check device must be installed to the bottom of the rail between the rail end and the hose if the hand shower can reach the shower floor when installed.

Pressure

Maximum Hydrostatic Pressure - 1000kpa
Recommended Maximum Hydrostatic Pressure - 500 kpa. (AS/NZS 3500)
Recommended Minimum Hydrostatic Pressure - 150 kpa.
Maximum Hydrostatic Pressure may be exceeded under test conditions only in accordance with AS/NZS 3500. Where hydrostatic pressure exceeds the maximum stated above, pressure limiting valves must be installed or warranty will be void.

Temperature

Maximum Water Temperature - 80°C
For optimum performance, Hot and Cold inlet water pressure should be equal.

Care and Maintenance

[1] Product should be inspected for surface damage prior to installation. [2] Cleaning and handling of all finishes must be performed carefully. [3] Clean products using a soft cloth with warm soapy water only. [4] Never use harsh detergents or abrasive cleaners as these will damage the product. [5] Water marks can be removed from Matt Finishes with an application of a carnauba wax based non-abrasive polish on a microfibre cloth. [6] Do not use undue pressure when cleaning and wipe in one direction only. [7] Contact with harsh chemicals such as hair dye, hair bleach etc will result in damage to the finish. [8] Tapware should never be installed using acetone silicones. [9] Avoid the use of wax based furniture creams as this can result in a build up of deposits which will detract from the appearance. [10] Damage to finishes arising from improper installation or post installation use or failure to observe the above care and cleaning instructions will void all warranty agreements.

Warranty

Rogerseller tapware, bathroom fittings and sanitaryware are covered by a five (5) year warranty from date of purchase. For full terms and conditions please refer to rogerseller.com.au

Dimensions are approximate. Information in this installation instruction is representative of the product available at the time of printing. Due to our policy of continuous product development, the design and specifications depicted are subject to change without notice. Please confirm all particulars with your client advisor prior to purchase.

Rogerseller Showrooms —

Melbourne
173-177 Barkly Avenue
Burnley VIC 3121
P 03 9429 8888

Sydney
18 Danks Street
Waterloo NSW 2017
P 02 8396 8700

Brisbane
74-76 McLachlan Street
Fortitude Valley QLD 4006
P 07 3251 4333

Concept Stores —

**Routleys Plumbing
Innovations (Malvern SA)**
P 08 8291 3000

rogerseller

rogerseller.com.au