



Cuvée Rothschild



Fine dining restaurants, hotels, bars and even casual restaurants offer wine to their customers. For quick and convenient access to wine, nothing compares to wine reach-in refrigerator units. These medium and large size, attractive, and functional refrigerators are not only designed to conveniently and adequately store wine, but commercial wine coolers also operate at the highest efficiency to keep wine and beverages at the ideal temperature. In addition to all types of restaurant equipment, we offer a diverse selection of wine fridges from which you can choose to best suit your business operation.

LCS300VX1ZPRO

239 Bottle Single Zone Wine Fridge

Cuvee Rothschild



Signature Features

239 Bottle Capacity

- Perfect capacity for professional use.

Shelves & Anti-Vibration System

- 14 telescopic shelves give a premium look and feel and allowing maximum use of internal space for your comfort

Double layer tempered glass

- Protect your wine collection from harmful UV rays, while keeping the interior insulated and moisture out

Precise Temperature & Humidity Control System

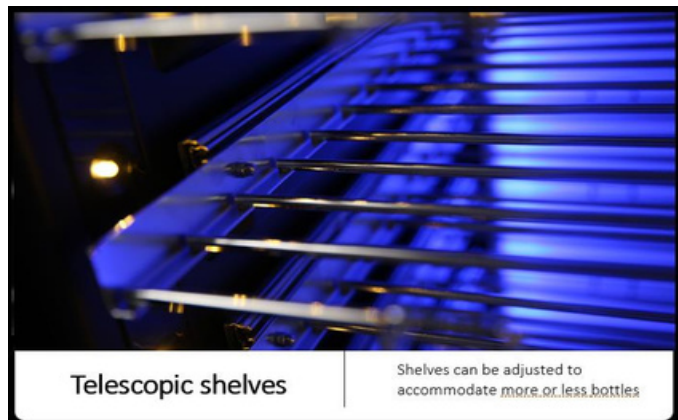
- Digital LED display and intuitive digital control to monitor and adjust for optimal temperature and humidity with just a touch of your fingertips

LED back panel

- The LED back panel can be customized in 3 different colors

Safety Lock

- Charcoal filter will help cleaning the internal air.
- Safety lock to secure your bottles



Actual color may vary. Design, specifications, and color availability are subject to change without notice, check lecast.com for up-to-date information. ©LeCavist | Australia
JUN22.V01

LCS300VX1ZPRO

239 Bottle Single Zone Wine Fridge

Cuvee Rothschild

Features

- 239 Bordeaux bottles capacity
- 600L fridge capacity
- Free-standing or built-in installation
- Single Zone (5-20°C)
- SN N ST Climate class
- Double layer tempered glass door
- Digital LED temperature & humidity control system
- Energy efficiency
- 14 telescopic shelves
- Anti-vibration system
- High efficiency compressor
- No frost system
- Quiet operation
- 2 Adjustable feet
- Lock
- Recessed handle
- Noise level 45 dB(A)
- 220-240W / 50Hz

Aesthetics

- Full blackglass
- Back panel LED light
- Inside temperature control display
- Door not reversible
- 2 Adjustable front feet

Warranty

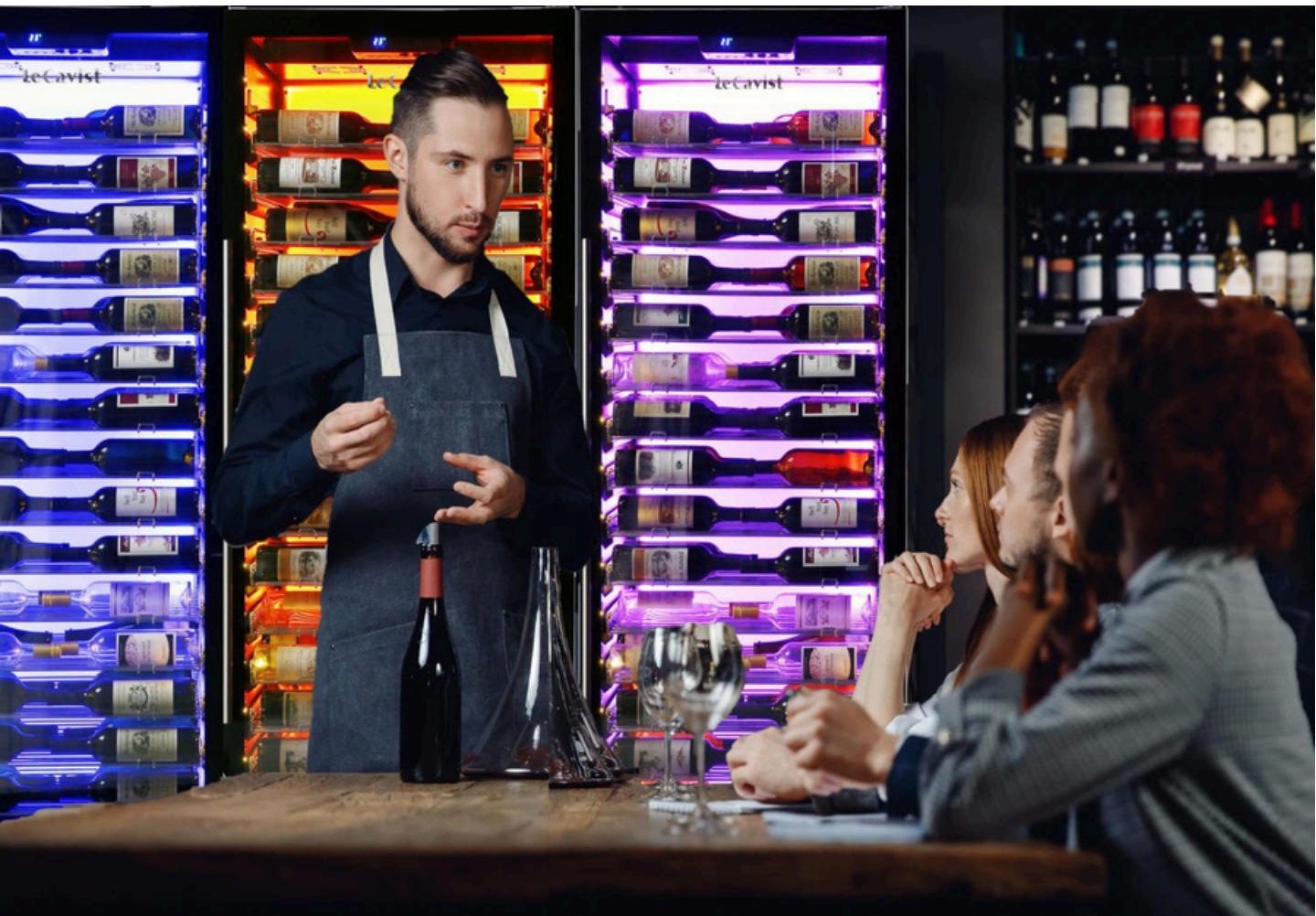
- Two(2) year parts and labor
- *Extend your warranty by registering your product lecavist.com*

Product Dimensions & Weight

- Outside: 750(W)x1870(H)x690(D) mm
- Weight: 145kg

Shipping Dimensions & Weight

- Dimensions: 785(W)x1920(H)x741(D) mm
- Weight: 155kg

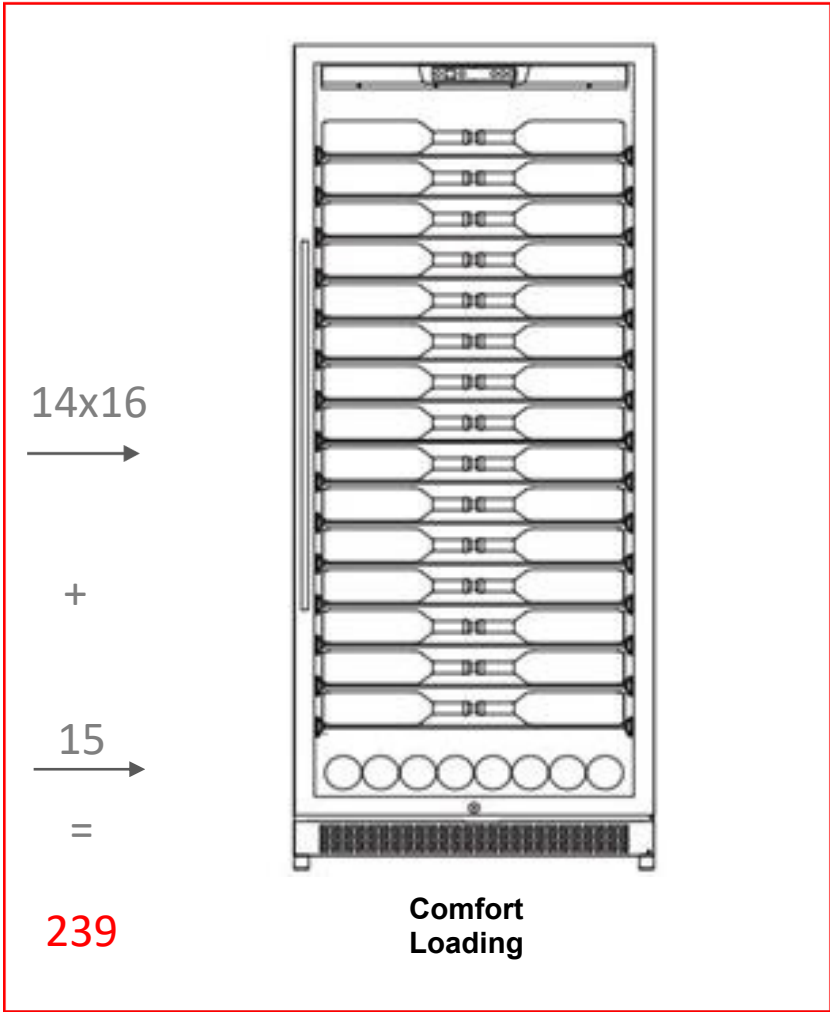


Actual color may vary. Design, specifications, and color availability are subject to change without notice, check lecavist.com for up-to-date information. ©LeCavist | Australia
JUN22.V01

LCS300VX1ZPRO 239 BottleSingleZoneWineFridge

Cuvee Rothschild

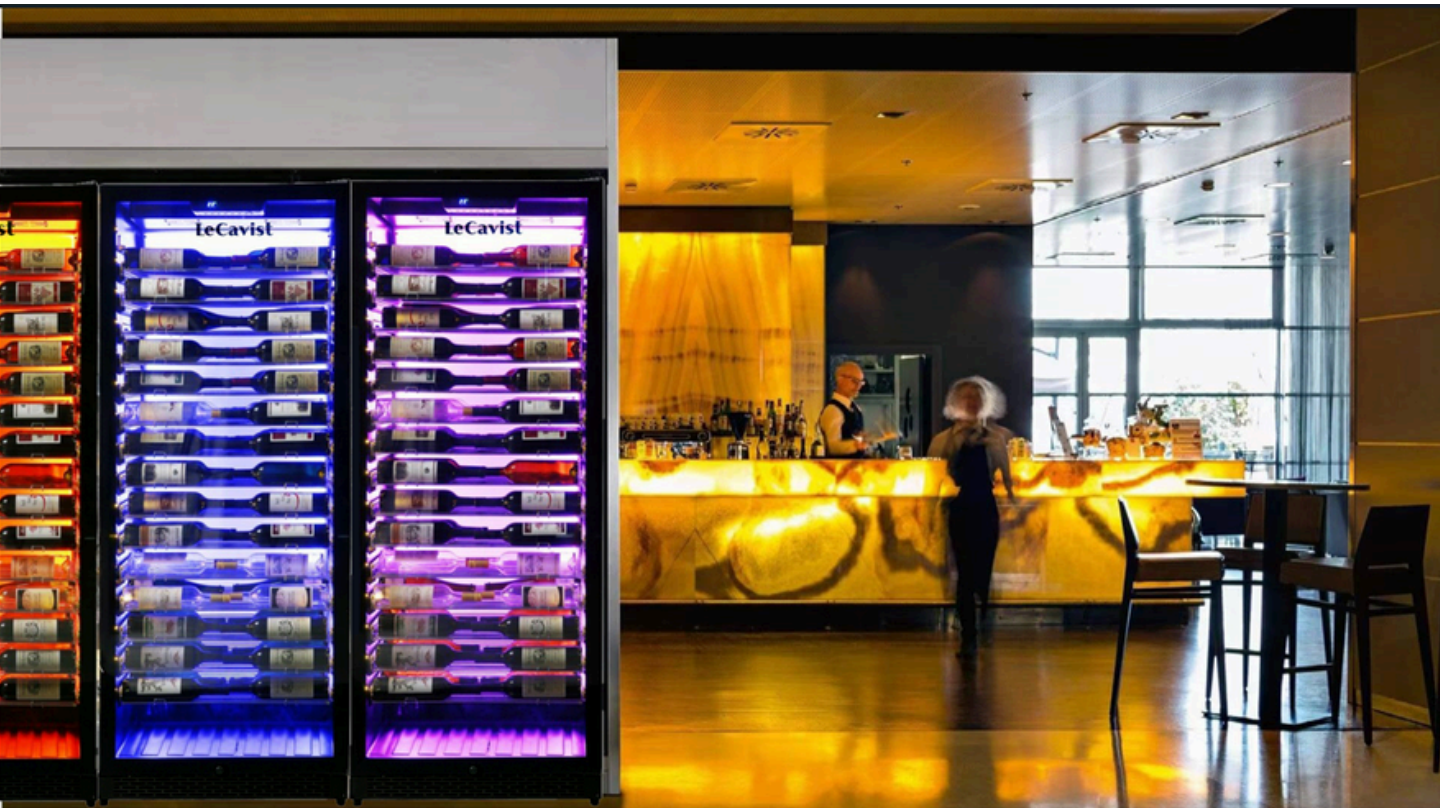
Bottle Loading Capacity



Ideal Wine Temperature

- Amarone Classic Dry Red Wine 17°C
- Amarone Classic Dry Red Wine 17°C
- Barbaresco Wine 17°C
- Barolo Wine 17°C
- Beaujolais Wine 13°C
- Bordeaux Blanc 6°C
- Dry white wine 8°C
- Bordeaux Red Wine 17°C
- White Burgundy 11°C
- Red Burgundy 18°C
- Brunello Wine 17°C
- Champagne 6°C
- Chianti Classico 16°C
- Languedoc-Roussillon 13°C
- Passito di Pantelleria 6°C
- Provence Rose 12°C
- Sweet Sparkling Wine 6°C
- Verdicchio di Matelica 8°C
- Verdicchio dei Castelli di Jesi 8°C
- Trentino White Wine 11°C
- Franciacorta White Wine 11°C
- Aromatic White 10°C
- Fruity Dry White 8°C
- Friulano Venetian Julia White Wine 11°C
- Rodano White Wine 15°C
- Loire Dry White Wine 10°C
- Loire Liqueur Wine 10°C
- LoireRedWine 14°C

- PassitoLiqueur Wine 8 - 18°C
- Rose Wine, New Wine 12°C
- Light Red Wine with Malt Tannins 14°C
- Red Wine with a Little of Tannins 16°C



Actual color may vary. Design, specifications, and color availability are subject to change without notice, check lecast.com for up-to-date information. ©LeCavist | Australia
JUN22.V01