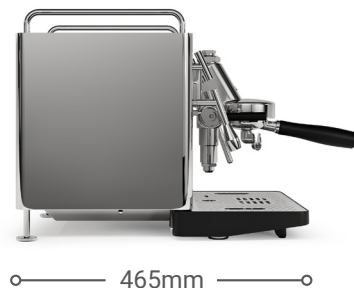
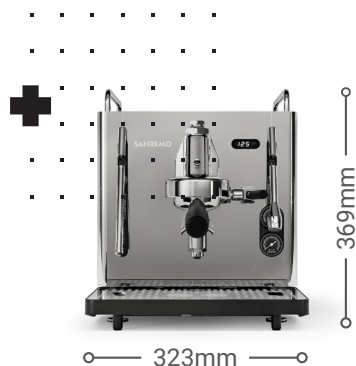




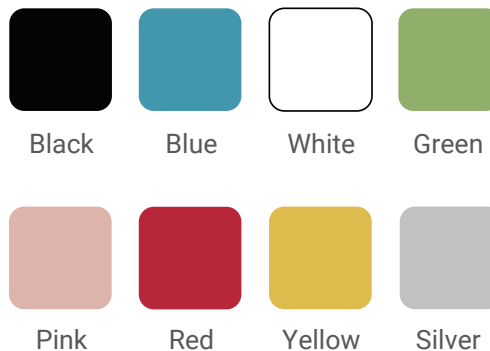
LIFE  
HAPPENS,  
COFFEE  
HELPS



THE FIRST  
"GOOD  
MORNING"  
YOU WANT  
TO HEAR!



### Colours Available



### CUBE Technical Features

- + 1.9L heat exchanger boiler stainless steel AISI 316
- + 1.8L internal water tank / plumbed connection
- + E61 thermosiphon group with mechanical pre-infusion
- + High performance rotary pump (54L/h)
- + Boiler power (1500W/230Vac)
- + 1620W/230Vac total power
- + Energy Saving System
- + User display
- + WiFi connection with Web App
- + Complete set of accessories for user experience:
  - + Microfibre Towel
  - + Tote Bag
  - + 350ml Stainless Steel Milk Jug
  - + Cleaning Brush
  - + Stainless Steel Tamper
  - + IMS Shower Screen
  - + Single Portafilter
  - + Double Portafilter
  - + Competition grade IMS Baskets
  - + \$500 Barista Pack total value

**SANREMO**  
COFFEEMACHINES  
**CONTACT US**  
info@sanremomachines.com.au  
sanremomachines.com.au