

ICBOG30

FEATURES

- Rigorously tested for decades of use
- Exceptional support from our Customer Care team
- Heavy-duty stainless steel construction
- Three individually contained grill burners for versatile cooking
- Halogen lights for night-time grilling
- Utilizes both direct and radiant heat for more thorough grilling
- Electric hot surface ignition for reliable start ups
- Double-wall hood front holds in heat
- Hood assist system makes opening and closing easy
- Three-position warming rack for the exact temperature you want
- Stainless steel burner grates
- Two-position rotisserie handles foods big and small

ACCESSORIES

- Canvas covers
- Griddle Plate
- Black control knob(s)



KNOB OPTIONS



GRILL SPECIFICATIONS

- 2 - 29 MJ Burners
- 1 - 15 MJ Rotisserie Burner

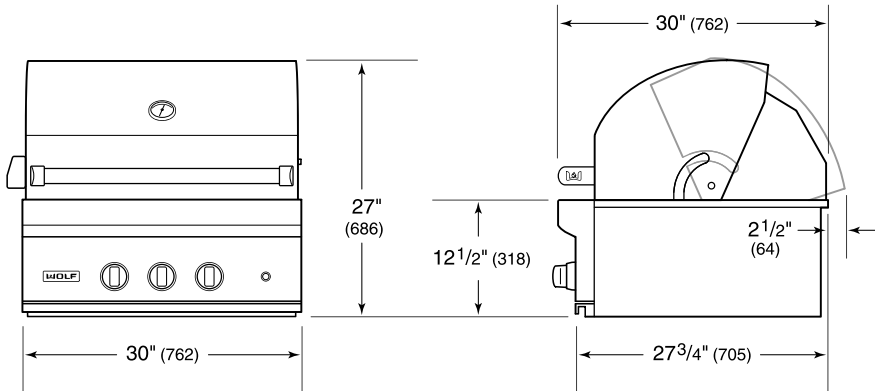


PRODUCT SPECIFICATIONS

Model	ICBOG30
Dimensions	762mmW x 686mmH x 762mmD
Weight	98 kg
Electrical Supply	220-240 VAC; 50/60 Hz
Electrical Service	10 amp dedicated circuit
Gas Supply	19 mm minimum
Gas Inlet	13 mm

NOTE: Dimensions in parenthesis are in millimeters unless otherwise specified

DIMENSIONS



GUIDE
ONLY.

THESE SPECIFICATIONS ARE A GUIDE ONLY. Not suitable for cabinetry, installation or services location.
SUB-ZERO AND WOLF OFFER A CUSTOMISED DESIGN CHECK SERVICE to ensure your new appliances are installed perfectly. Please contact our Customer Care team for further information regarding our Design Check Service, or for detailed product specification and installation advice.
Phone: 1300 808 859 Email: enquiries@subzero.com
Sub-Zero and Wolf Design Guides are also available via our website: www.subzero-wolf.com.au