

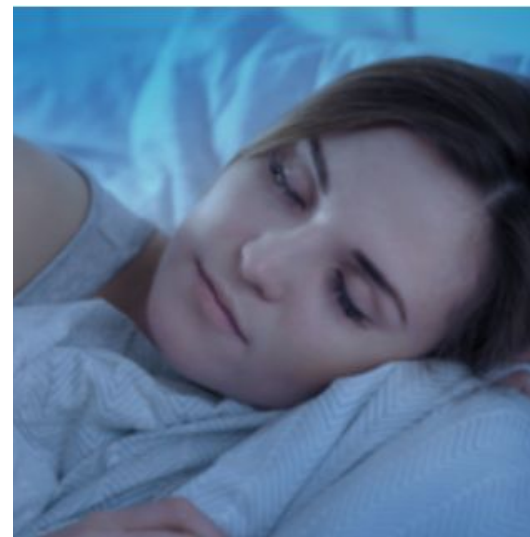


## DEP 216

- 16 l/d\*
- Digital Display
- Anti-Allergy filter
- Asthma and allergy friendly certified
- Active Carbon filter against odours
- Anti-Dust filter
- Very Quiet! Only 38 dB(A): Suitable for bedrooms
- Environment-friendly: 30% recycled plastic\*\*\*\*
- 4 Castors
- 475 times more eco-friendly \*\*
- Multipurpose dehumidifier: it removes humidity in excess and helps to dry up your clothes and contribute to clean the air you breath
- Easily removable water tank (**capacity: 4l.**)
- Timer 12h
- Clothes Drying function
- Electronic anti-frost device
- Continuous drainage hose provided
- Integrated handle to maximize portability
- Auto-restart function

### De'Longhi Dehumidification

## DEP 216 AriaDry Evo



### Extremely quiet !

Without compromising its dehumidification capacities, DEP216 is **suitable for the bedroom.**

**43% less noise for a quieter, yet performing dehumidification \*\*\*\*\***

### 4L water tank

Double the size compared to previous generation

NEW LOGO COMING SOON



AS certification & Active carbon filter against odours. **Asthma & Allergy certification on hold until further decisions**

dust-filter, a removable allergen filter that captures various allergens and an Active Carbon Filter to help removing odours

The CERTIFIED asthma & allergy friendly™ Mark is a Registered Certification Mark of ALLERGY STANDARDS LTD



### Clothes Drying function

With the clothes drying function, the DEP216 helps to reduce laundry drying times.



### Wheels included

4 mountable, swivelling wheels included.



### Drain System

To remove moisture without any need to empty the tank.



### Environment friendly

Made with a minimum of 30% recycled plastic\*\*\*\*

Technical Data	Unit	DATA
Dehumidifying capacity *	l/24h	16
Tank capacity	l	4
For rooms up to***	m <sup>3</sup>	75
Noise pressure level	dB(A)	38
Anti-Allergy Filter		Yes
Carbon-active filter		Yes
Anti-Dust filter		Yes
Continuous drainage		Yes
Electronic anti-freeze		Yes
Working Temperature	°C	2-30
Max air flow rate	m <sup>3</sup> /h	145
Input power	W	205
Rated voltage – frequency	V~Hz	220-240~50
Refrigerant gas		R290
Dimensions (hxlxp)	mm	316x258x484
Weight	kg	10

\* 30°C/80% R.H.

\*\*475 times compared to the impact of Global Warming of R134 - F-Gas Reg. 517/2014.

\*\*\* Rooms dimensions are approximate and deeply depend on temperature and moisture conditions while using the product

\*\*\*\*minimum of 10% of recycled content, consisting of 30% of recycled plastic (electrical component excluded).

\*\*\*\*\*vs previous product version