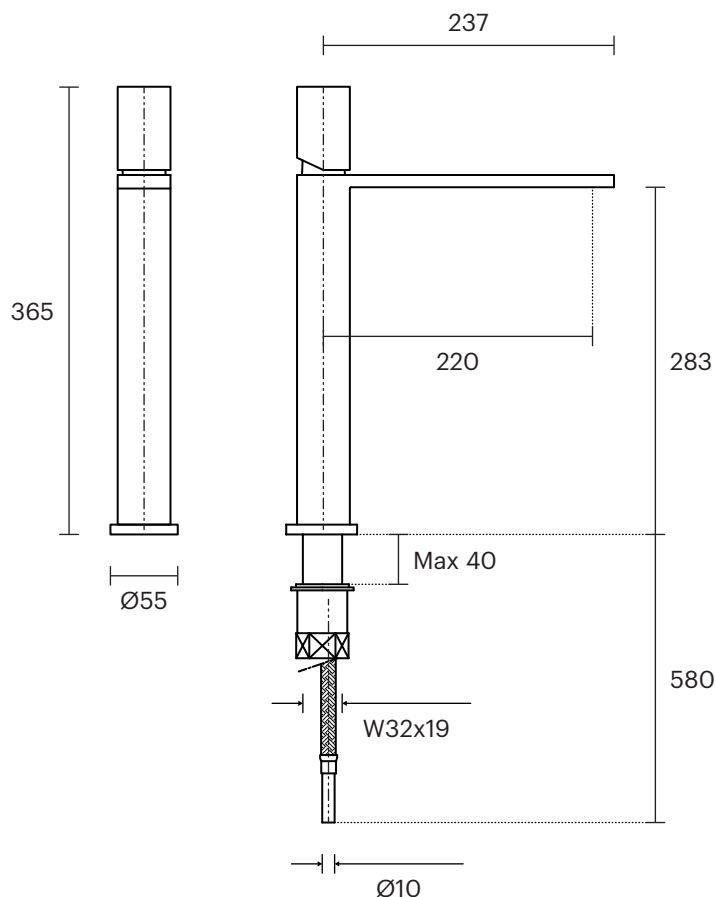
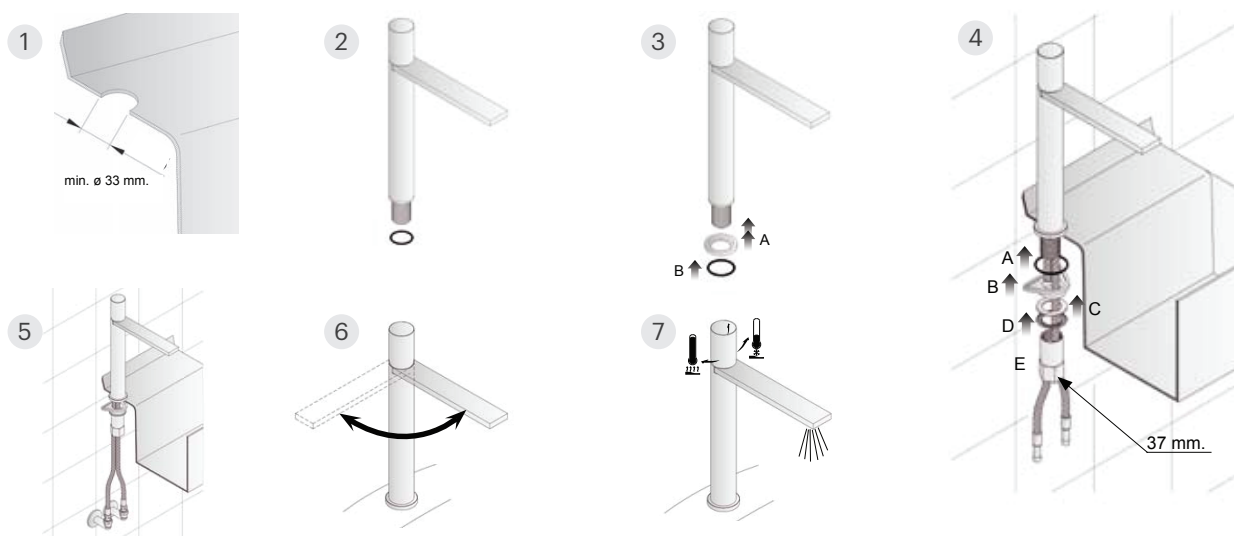


**Fantini Milano Kitchen Sink Mixer**  
329174



**Please note**

- This mixer requires a min 33mm diameter hole in the sink or worktop. If the hole is 33mm to 34mm you do not need to install the base ring. If the hole is larger than 34mm you must install the base ring.
- Connect hot and cold flexible hoses to isolation taps, a 10mm to 1/2 BSP adapter is supplied
- Do not twist, kink or stretch flexible hoses (minimum bend radius 45mm). Hand tighten flexible hose connecting nuts, then apply quarter turn with a spanner.
- Maximum working pressure 1000kpa. Minimum working pressure 100kpa. Recommended working pressure 200 – 500kpa.
- Supply pipe work must be flushed clean before installation.
- Full installation instructions come with the product.



Dimensions are approximate. Information provided in this installation guide is representative of the actual product available at the time of printing. Due to our policy of continuous product development, the design and specifications depicted are subject to change without notice. Please confirm all particulars with your sales consultant prior to purchase.