

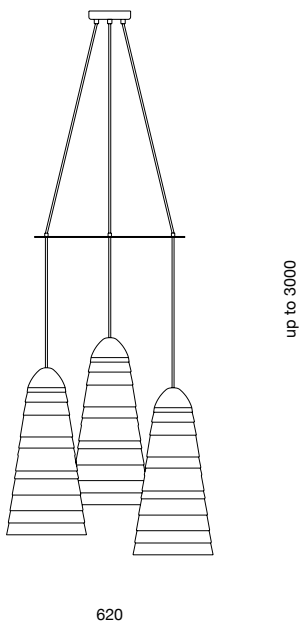
# Beata cluster



**PINCH**

# Beata cluster

---



The Beata Cluster combines three shades suspended from a black metal support to deliver a soft and sculptural chandelier that is as equally engaging when lit or unlit.

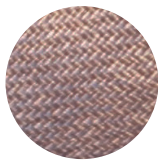
 Can also be made to bespoke sizes and specifications.

---

## MATERIALS



White



Nutmeg

---

## MATERIALS

Parasial woven straw shade.  
Black coloured woven flex.  
Black powder coated metal rose and ring.

## DIMENSIONS (mm)

3 x shades : 260 d x 500 h  
Overall diameter : 620  
Height : up to 3000

## DATE OF DESIGN

2019

## BULB REQUIREMENTS

E27 / E26 max 40w  
CE / UL certified fittings available.

## WARRANTY

24 months.

## ADDITIONAL INFORMATION

As a piece hand made from natural materials, each light is subject to variations in overall size, form and tone. For information on how to maintain and protect light shades, please refer to the PINCH product care guide.







