

9kg Front-Load Washing Machine



MODEL AWM1916W



PRODUCT INFORMATION

FINISH

- white enamel exterior

PROGRAMS

- 15 wash programs - rapid 12', daily 60°/60', shirts, mix, sport, handwash/delicate, spin, allergy safe, rinse, wool, easy care, ECO 20°, cotton ECO, pre-wash cotton, cotton 90°
- 3 cotton settings, ECO 20°, delicate, allergy safe, daily 60' wash, rapid wash, mix wash

DOOR

- Left hand hinge

FEATURES

- 58 db Washing, 78 db spinning
- steam assist cleaning system
- temperature setting
- spin & time delay setting
- 3 compartment detergent dosage
- wide opening door with 33cm Ø port hole
- ECO-Logic system
- washing cycle indicator
- LED display
- time remaining indicator
- removable top cover & adjustable feet
- cold water connection only
- water pump with filter

CAPACITY & INTERIOR

- white enamel stainless steel 60L drum
- 9kg washing

POWER & MOTOR

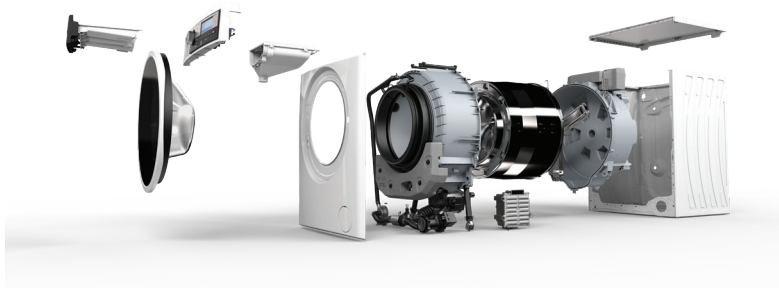
- Inverter motor
- spin speed 1400 rpm
- DC motor

SAFETY

- foam protection
- unbalance control system
- overflow protection
- failure detection system
- child lock

TECHNICAL INFORMATION

- Power lead: 1.5m long
- Drain hose: 1.6m long
- Water inlet hose: 1.4m long



EAN 9347777005595

AR06062024

DISCLAIMER

Eurolinx & Worldwide appliances Pty Ltd, is continually seeking ways to improve the design specifications, aesthetics and production techniques of its products. As a result alterations to our products and designs take place continually. Whilst every effort is made to produce information and literature that is up to date, this brochure should not be regarded as an infallible guide to the current specifications, nor does it constitute an offer for the sale of any particular product. Product dimensions indicated in our literature is indicative only. Actual product only should be used to define dimension cut outs. Distributors, and retailers are not agents of Eurolinx or Worldwide appliances and are not authorised to bind Eurolinx or Worldwide appliances by any express or implied undertaking or representation.

Australia National Telephone Number 1300 694 583
For showroom opening times, visit our website

artusi.com.au

NSW & ACT (Head Office)
48-50 Moore Street
Leichhardt
F 02 8569 4699

Victoria
2r/131 Church Street
Hawthorn

QLD
Contact Head Office

WA & NT
Contact Head Office

9kg Front-Load Washing Machine

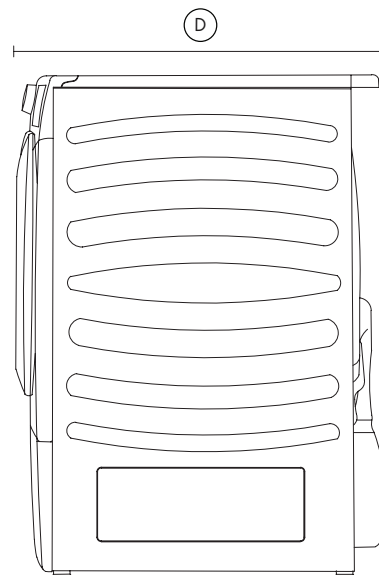
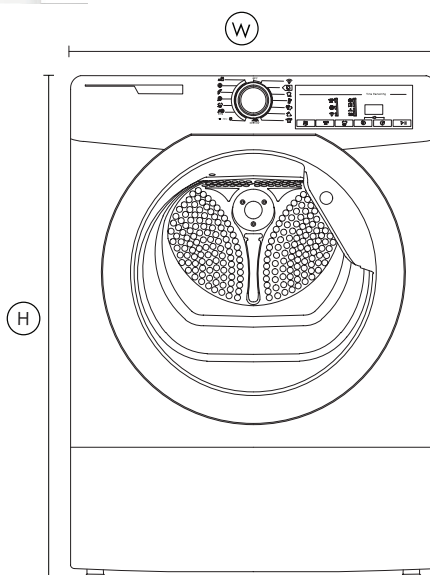


MODEL AWM1916W

TECHNICAL DIAGRAM



W 597mm
H 845mm
D 632mm



NB: drawings are not to scale — for detailed installation instructions, please refer to user guide.

EAN 9347777005595

AR06062024

AWM1916W 9kg front-load washing machine
H: 845 x W: 597 x D: 632
Net weight: 75.5kgs
3-pin 10 amp plug

DISCLAIMER

Eurolinx & Worldwide appliances pty Ltd, is continually seeking ways to improve the design specifications, aesthetics and production techniques of its products. As a result alterations to our products and designs take place continually. Whilst every effort is made to produce information and literature that is up to date, this brochure should not be regarded as an infallible guide to the current specifications, nor does it constitute an offer for the sale of any particular product. Product dimensions indicated in our literature is indicative only. Actual product only should be used to define dimension cut outs. Distributors, and retailers are not agents of Eurolinx or Worldwide appliances and are not authorised to bind Eurolinx or Worldwide appliances by any express or implied undertaking or representation.

Australia National Telephone Number 1300 694 583
For showroom opening times, visit our website

artusi.com.au

NSW & ACT (Head Office)
48-50 Moore Street
Leichhardt
F 02 8569 4699

Victoria
2r/131 Church Street
Hawthorn

QLD
Contact Head Office

WA & NT
Contact Head Office